



ANN STREET GIRLS' SCHOOL, 1858.

Now the Parish Church Infant Day and Sunday School.



ROCHDALE PARISH CHURCH AND CHURCHYARD,
1892.

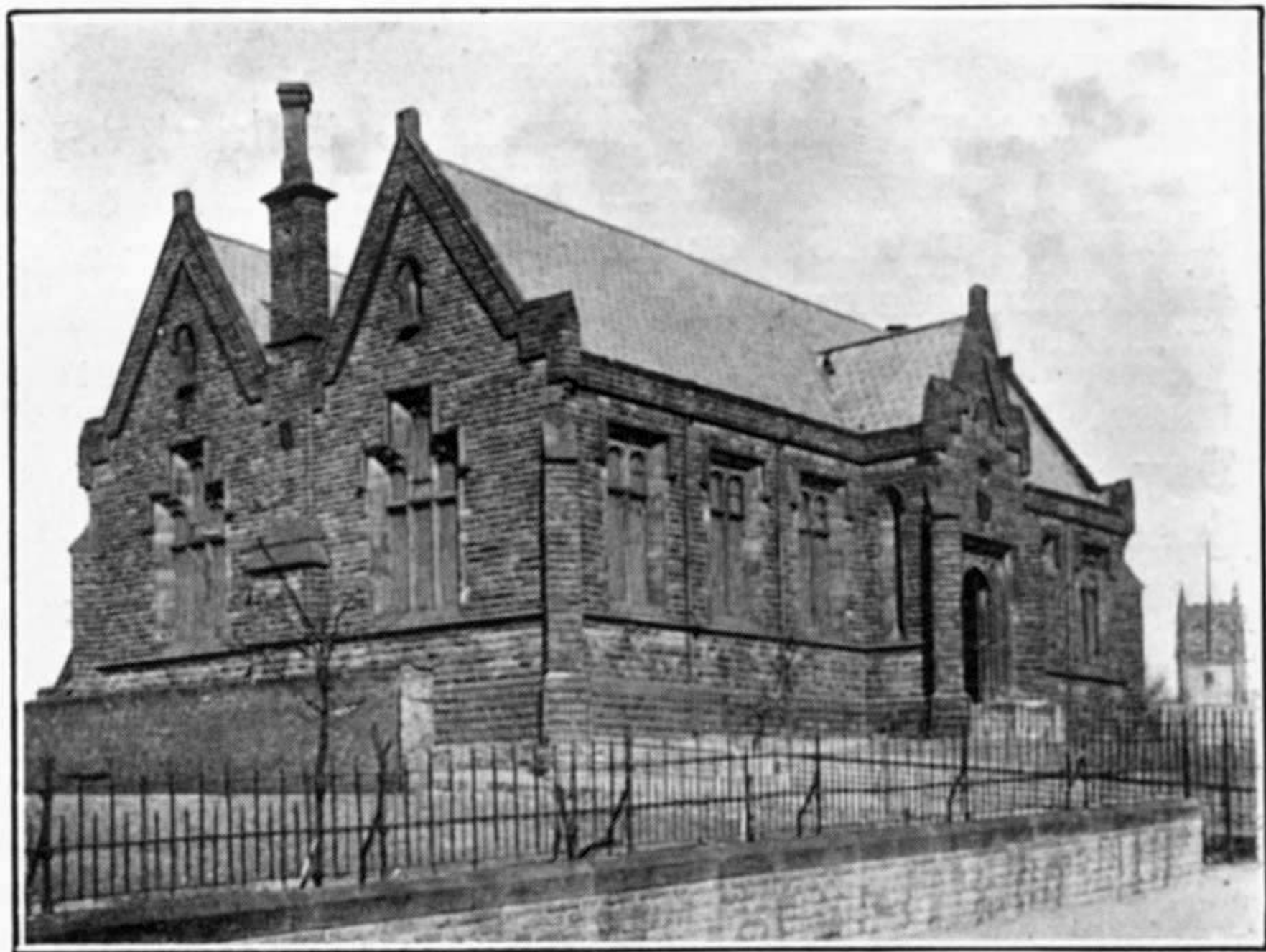


ROCHDALE PARISH CHURCH EARLY IN 19th CENTURY.



ROCHDALE PARISH CHURCH INTERIOR IN 1904.

(from a plate kindly lent by the Manchester Geographical Society).



SPARROW HILL BOYS' DAY SCHOOL, AND SUNDAY SCHOOL,
1844—1895 ; PUBLIC GYMNASIUM SINCE 1896.



The Old Grammar School



View of Park

